

| 产业链数据 | | 项目 | 数据 | 环比 | 项目 | 数据 | 环比 |
|-------|--|----------------|----------|---------|---------------|----------|--------|
| 期货市场 | | 郑棉1901 | 14965.00 | 0.67% | 郑棉活跃合约 | 14965.00 | 0.67% |
| | | 郑棉1905 | 15740.00 | 0.67% | 美棉活跃合约 | 79.07 | 1.92% |
| | | 郑棉1909 | 16245.00 | 0.68% | | | |
| 现货市场 | | CC Index 3128B | 15606.00 | -0.13% | 江苏 | 15700 | 0.00% |
| | | FC Index M | 89.29 | 1.48% | 湖北 | 15650 | -0.19% |
| | | FC Index 1%关税 | 15313.00 | 1.46% | 河南 | 15390 | -0.13% |
| | | 印度C32S | 23460.00 | -0.17% | 新疆 | 15500 | 0.00% |
| | | CY Index C32S | 23880.00 | -0.08% | 全国平均 | 15663.85 | -0.10% |
| 利润 | | 棉花进口利润 | 293 | -45.13% | 纺纱利润 | 526 | 11.61% |
| | | 棉纱进口利润 | 420 | 5.00% | | | |
| 价差 | | 期货内外价差 | 2919 | 4.74% | CF1901-CF1905 | -775 | -0.65% |
| | | 现货内外价差 | 293 | -45.13% | CF1905-CF1909 | -505 | -1.00% |
| | | 基差 | 641 | -15.88% | CF1909-CF2001 | | |
| 仓单 | | 注册仓单量 | 9418 | -0.23% | 有效预报 | 1431 | 21.58% |
| 抛储 | | 抛储成交量 | 9824.5 | -12.99% | 抛储均价 | 14674 | -1.14% |
| | | 抛储成交率 | 32.71 | -1.77% | | | |

产业链动态跟踪

图1：棉花现货价格

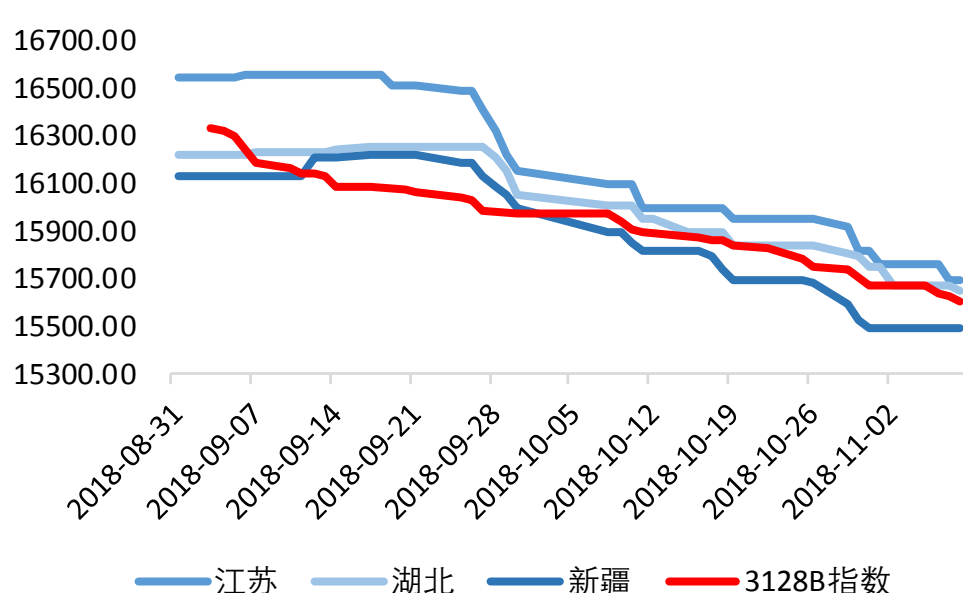


图2：棉花期货内外价差

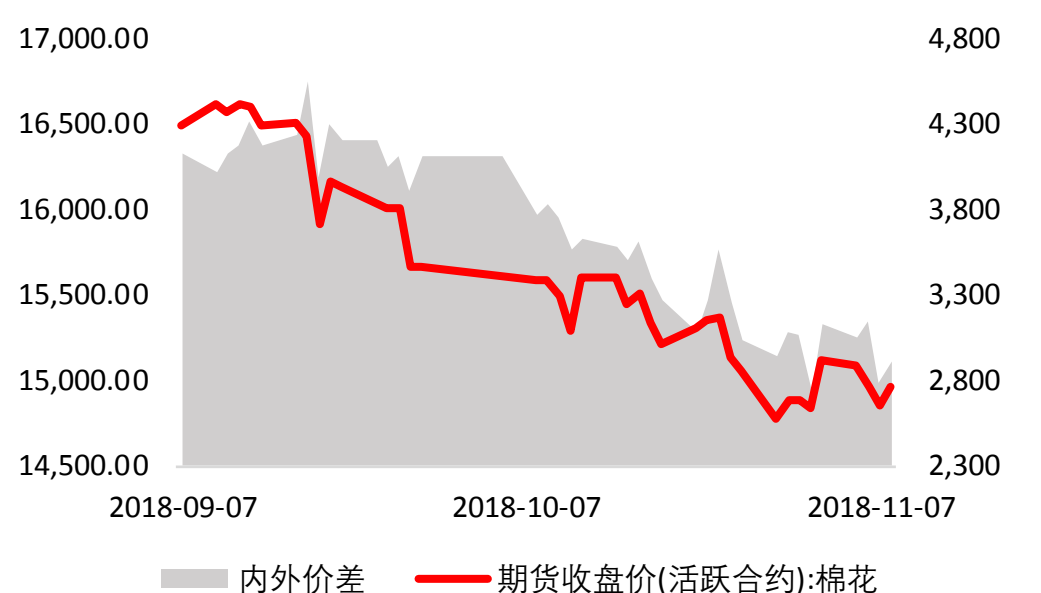


图3：棉花市场结构

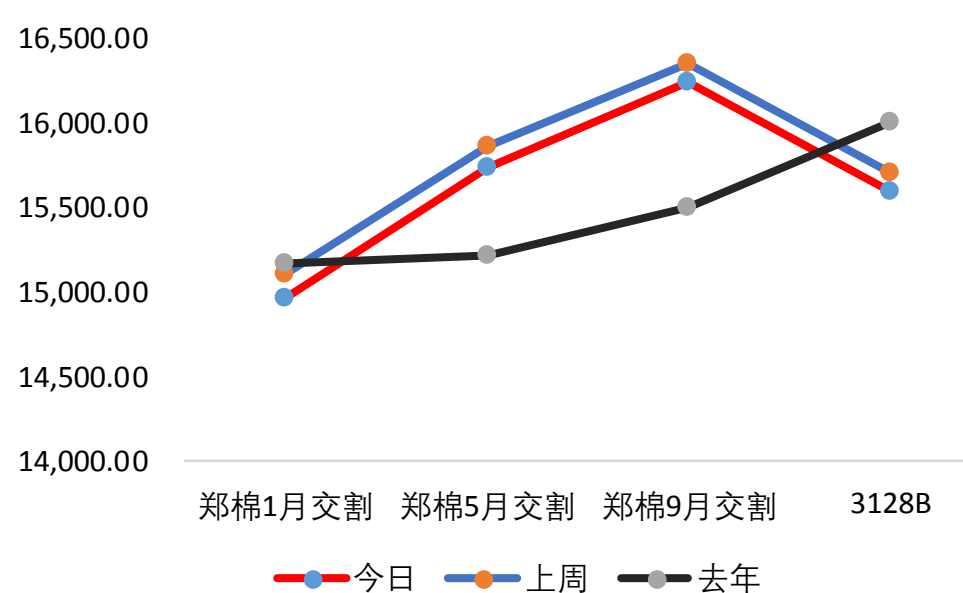


图4：籽棉收购成本估算

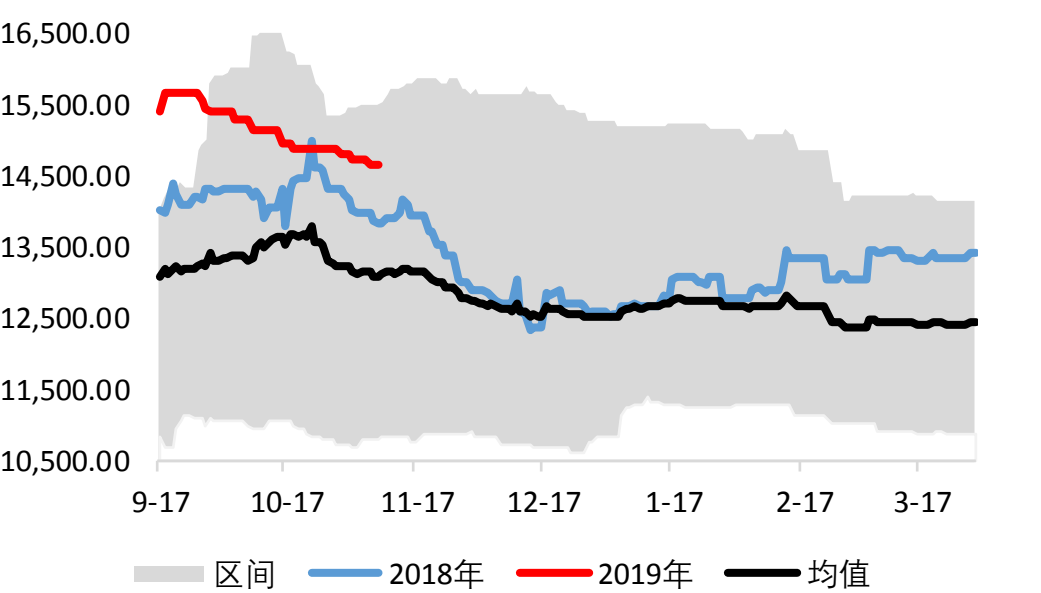


图5：纺纱利润

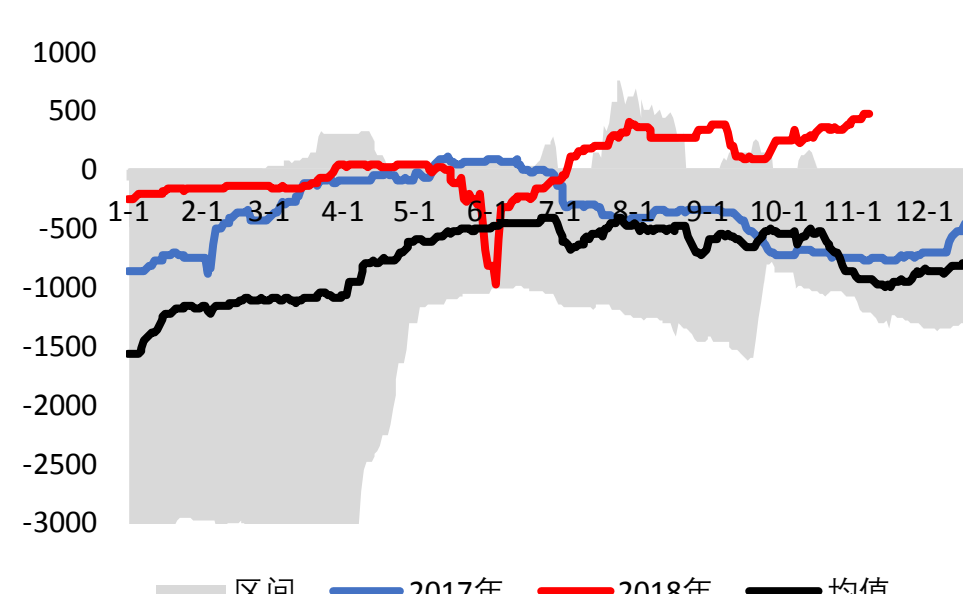


图6：棉纱进口利润

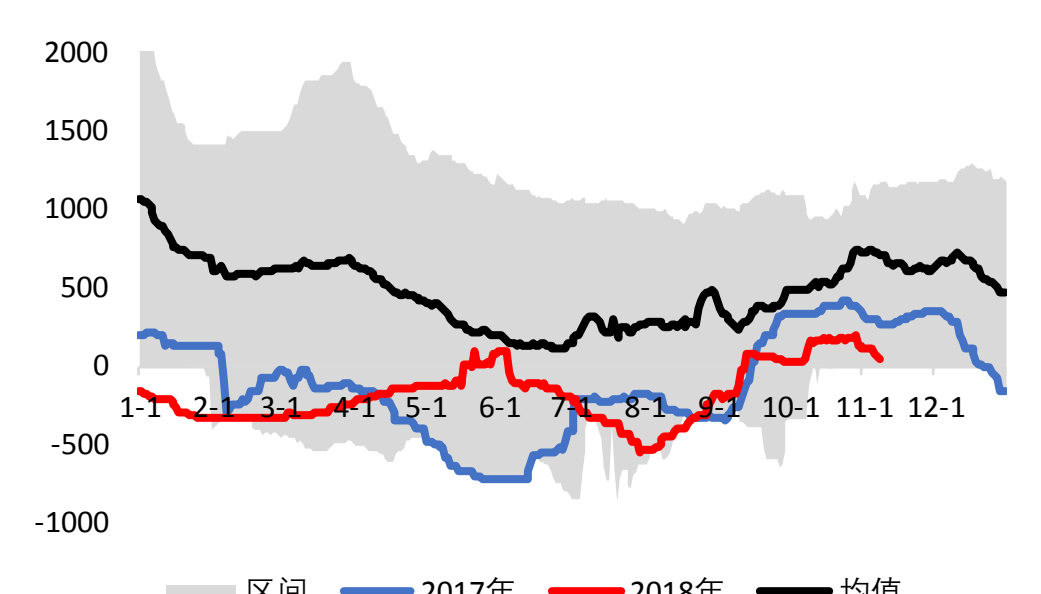


图7：棉花进口利润

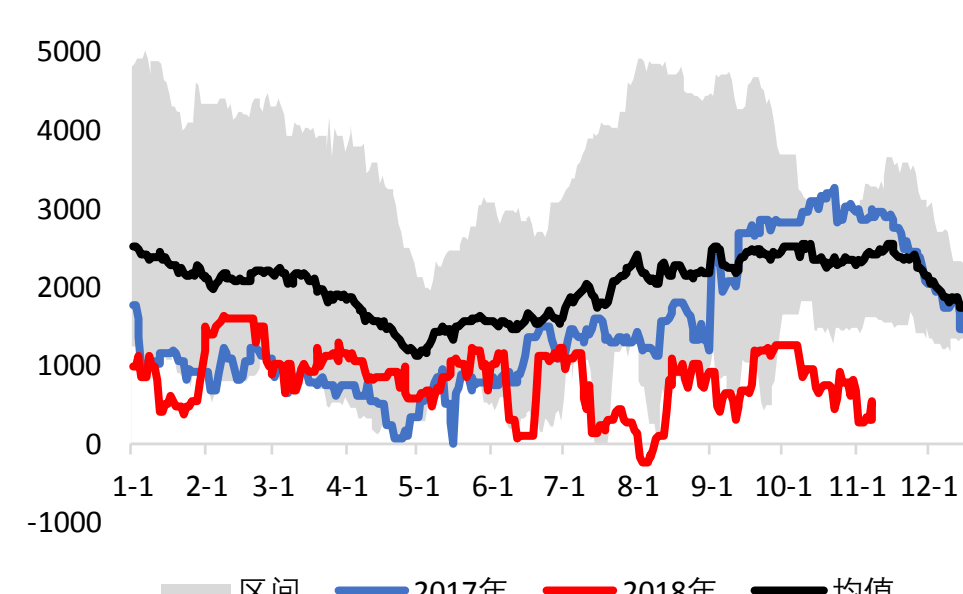


图8：基差

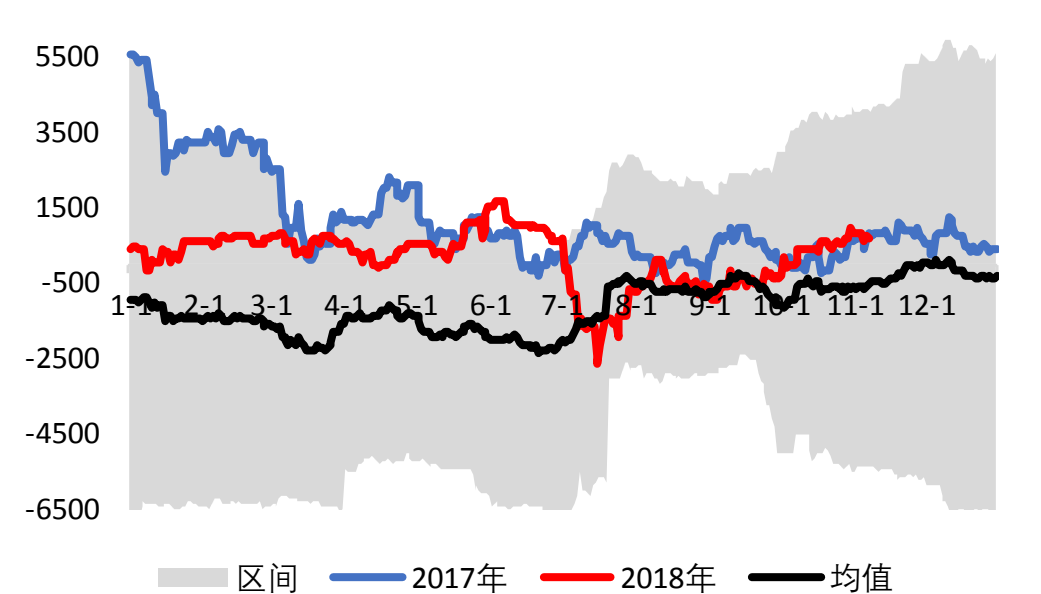


图9：棉花1-5价差

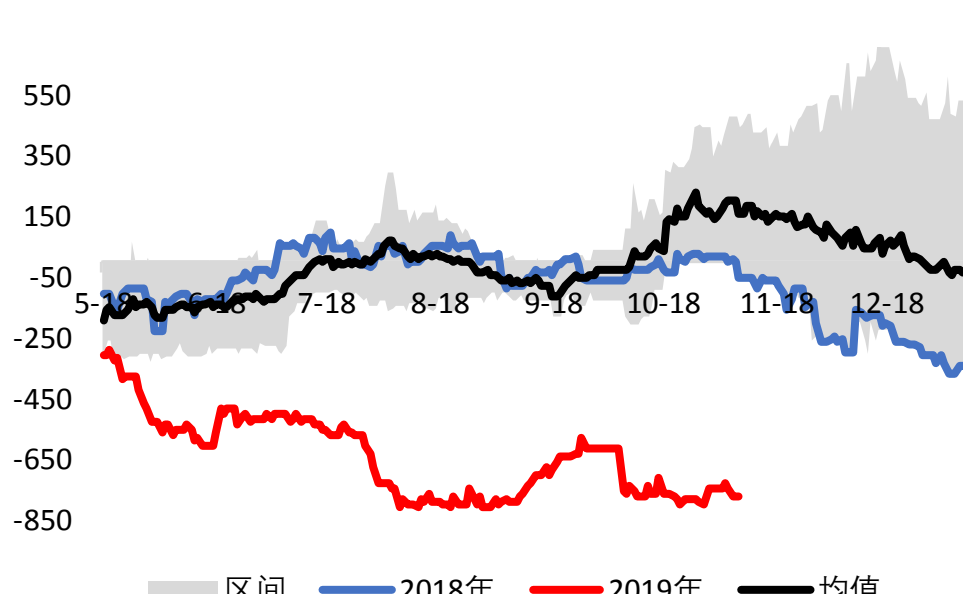


图10：棉花5-9价差

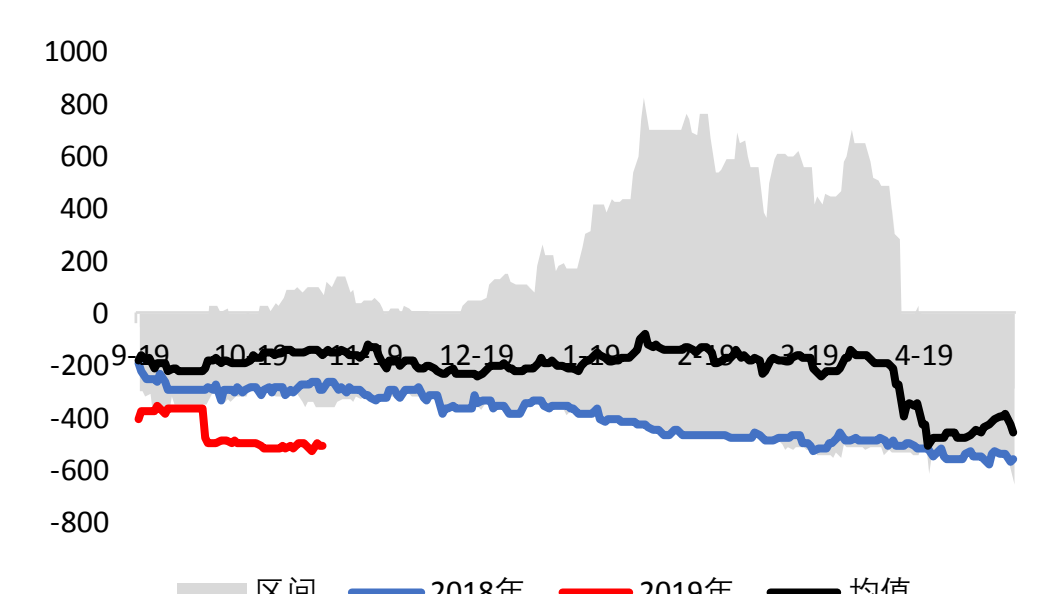


图11：棉花抛储

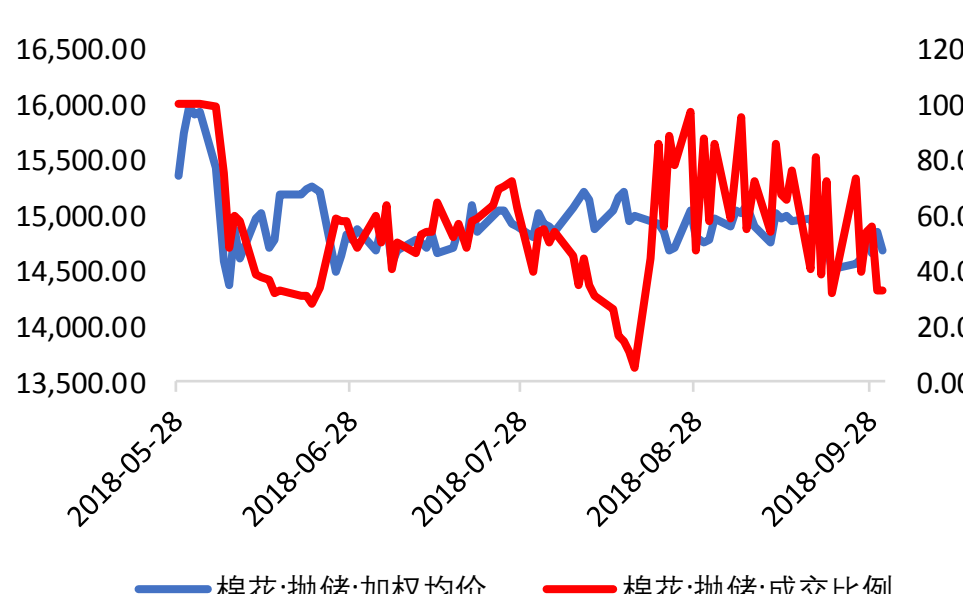
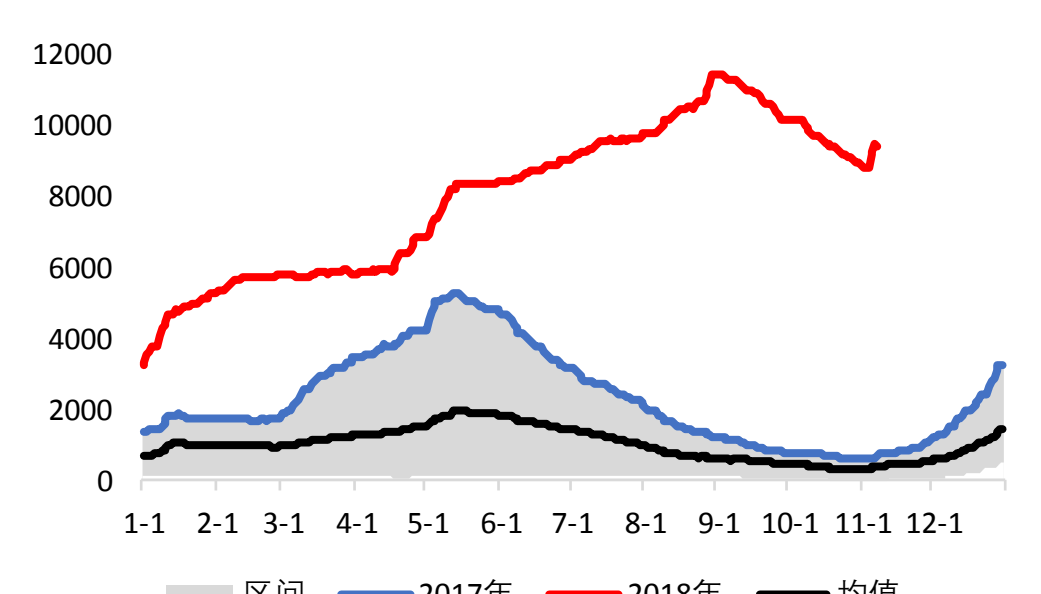


图12：仓单



信息提示

USDA11月报，全球产量下调49.4万吨，其中美国下调29.5万吨，印度下调15.3万吨，巴基斯坦下调10.9万吨。现货价格持续走弱，下游市场冷淡。